

# EDIFÍCIO ARCO - PISO 3

ARCO BUILDING - FLOOR 3

# ARCO D'OLIVE

by FENESTRA

## T2-C5 página 1/2 page 1/2

ÁREA BRUTA PRIVATIVA | **98,3m<sup>2</sup>**

TOTAL PRIVATE AREA

ÁREA EXTERIOR | **12,7m<sup>2</sup>**

OUTDOOR AREA

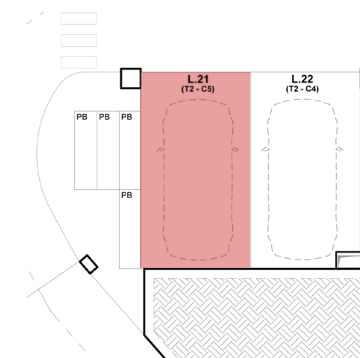
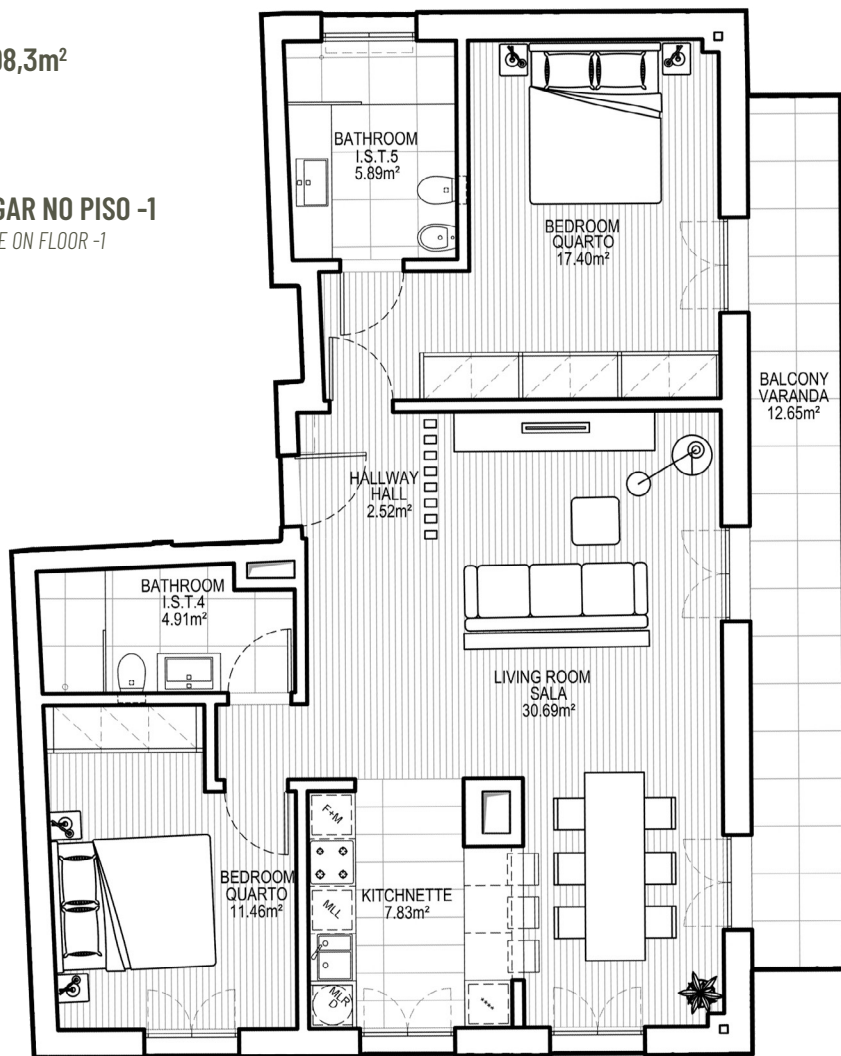
ESTACIONAMENTO | **1 LUGAR NO PISO -1**

PARKING

1 PLACE ON FLOOR -1

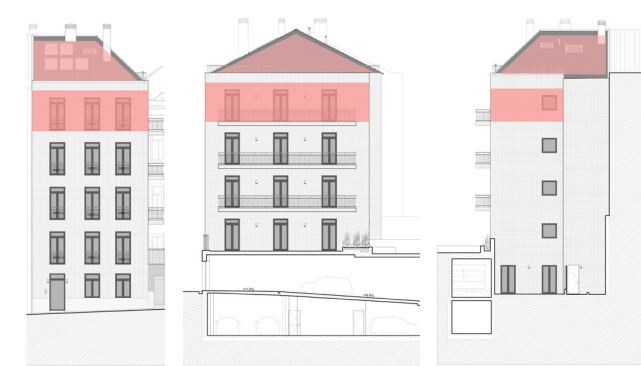
ARRUMO | **45,24m<sup>2</sup>**

STORAGE



As áreas apresentadas são aproximadas, indicativas e sem carácter contratual. Cálculo de áreas de acordo com a lei portuguesa.

The areas here contained are approximate, indicative and have no contractual nature. Areas follow the portuguese law.



# EDIFÍCIO ARCO - PISO 4

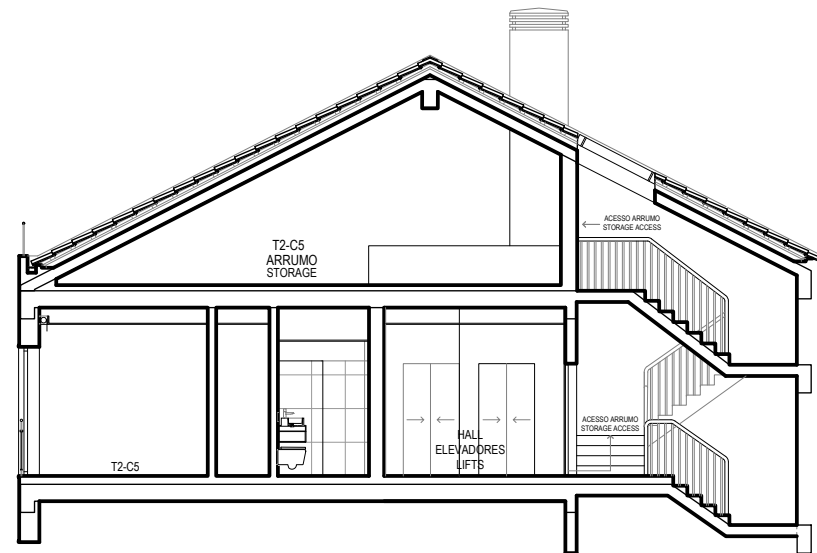
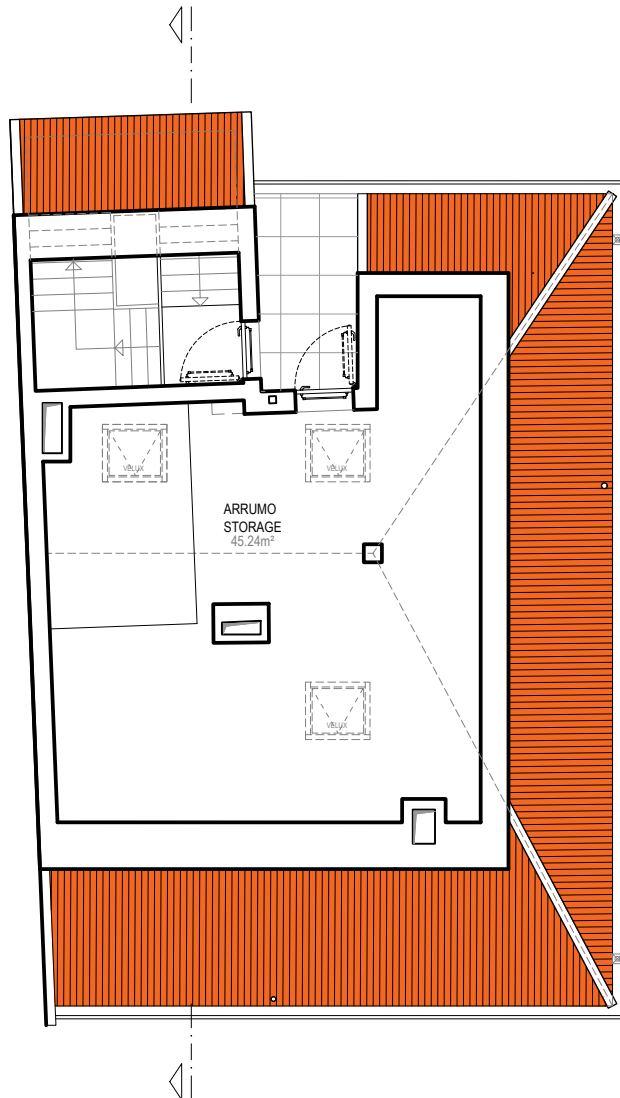
ARCO BUILDING - FLOOR 4

# ARCO D'OLIVE

by FENESTRA

**T2-C5** página 2/2  
page 2/2

ARRUMO | 45,24m<sup>2</sup>  
STORAGE



As áreas apresentadas são aproximadas, indicativas e sem carácter contratual. Cálculo de áreas de acordo com a lei portuguesa.

The areas here contained are approximate, indicative and have no contractual nature. Areas follow the portuguese law.